

MHA Supports MPSD's New Disciplinary Model

The Meridian Housing Authority along with community leaders and business owners have partnered with the Meridian Public School District (MPSD) to provide viable solutions to address inappropriate behaviors in the school system.



Residents at Mountain View gather to receive information from MPSD on the new PBIS Model

Several informative rallies were held at six MHA housing communities to inform residents of the new model geared towards the re-enforcement of positive behavioral methods.

The Positive Behavioral Intervention Support (PBIS) model was implemented in all Meridian public schools. The goal of PBIS remains to decrease school suspensions by

providing motivational alternatives to address negative classroom behavior.

Several featured speakers including MPSD Superintendent, Dr. Alvin Taylor, Mayor Percy Bland, Judge Veldore Young and new PBIS Director, Howard Hagwood were on hand to address all questions and concerns.

PBIS handouts were issued to parents and students during the information-packed rallies.

Additional PBIS Information:

PBIS is a national model that provides an alternative approach to school suspensions which, according to an analysis by "Advocates for Children and Youth" have spiked to record and near-record levels across the state. When effectively implemented, PBIS reduces instances of students acting out, thereby reducing the number of suspensions.

Rallies were conducted at Mt. View Village, Eastern and Western Gardens, Carousel Place, Frank Berry Courts and George Reese Courts. Event organizers recorded an attendance of over 1,500 participants during the promotion of the PBIS model

For more information about PBIS, contact MPSD at (601) 483-6271 or call your child's school principal.

MHA holds First Annual Spelling Bee

Resident Advisory Board members along with support from the Community and Supportive Service staff, organized the Meridian Housing Authority first annual resident spelling bee contest.



Spelling Bee Winners; Aretarious Neal and Argentina Tucker with RAB president, Brenda Griffin and HCV Coordinator, Elaine Mauricey

Over fifteen participants representing various MHA housing communities gathered at the agency's central office for this summer's most anticipated resident event.

The contest was open to all residents ranging from the 1st to 12th grade. RAB members provided their residents with the event's study guide outlining the rules of the contest and words selected for the spelling bee. Community leaders including Dr. Ceatrice Kelly of NFusion X, and Adrian Cross with MCC, acted as judges and monitors for the contest.

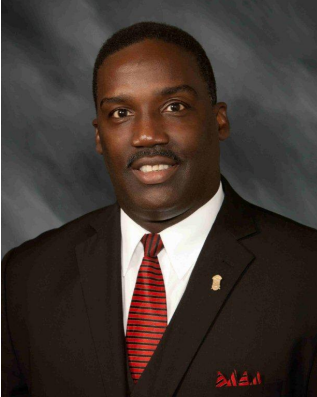
All participants received a Certificate of Participation and were treated to a special luncheon sponsored by the RAB.

Congratulations to Western Gardens residents Aretarious Neal and Argentina Tucker for winning first place in their age divisions.

The Meridian Housing Authority is very proud of all participants and is looking forward to next year. For more information regarding the MHA Spelling Bee Contest, contact Shelia Austin at (601) 693-2800, extension 228.



Executive Director, Ron Turner, Sr with 2013 Spelling Bee Participants



Executive Director’s Message

On September 16th, Meridian Mayor Percy Bland joined me along with MHA Board Chairman, Wilbert Jones during the two-day Midwest Regional Housing Conference held in Cleveland, Ohio for Choice Neighborhood grant recipients.

The Meridian Choice Neighborhood transformation team received valuable data from the conference which will be used to strengthen the revitalization planning efforts of distressed conditions identified in the Meridian’s East

Ronald J. Turner, Sr.

End boundaries which includes George Reese Courts Apartments.

During Meridian’s formal planning presentation, Mayor Bland ensured HUD officials that upon successful completion of the East End Transformation Plan which is due January 2014, Meridian will be fully prepared to submit its CN Implementation grant application.

East End revitalization efforts include: (A) Development of a safe asset and amenity-rich walkable neighborhood, (B) Strategic replacement housing development throughout Meridian’s Choice Neighborhood boundaries, (C) High quality educational outcomes for low-performing schools in the neighborhood, (D) Adequate transportation to places of employment and health care facilities for neighboring residents, (E) Enhanced social service opportunities throughout the community.

Successful CN Implementation grantees could receive up to 30 million dollars in funding support from HUD. For more information regarding Meridian’s East End Choice Neighborhood revitalization efforts, please contact Sarah Johnson at (601) 693-4285.

NEWS FLASH!!!!!!

LOOK WHATS NEW AND IMPROVED AT MHA! OUR MHA WEBSITE IS UPDATED WITH NEW INFORMATION JUST FOR YOU!

MHA has a new and improved website just for you! Please take a moment to view the website! This website is designed to keep the Meridian community informed about housing updates, available programs, and services.

Just go to MHA web address www.meridianhousing.net and browse the webpage and let us know what you think! We want to hear from you. To give feedback, contact Community and Supportive Services at 601.693.2800, extension 228 or 230.

A Homebuyer Workshop Offered to ALL MHA Residents

Do you have a desire to own your home one day? Do you picture yourself laughing, talking, and having fun and fellowship with friends and family while gathered on your front or back porch? Perhaps you thought of having a family and friends cook-out for your family and friends. Your desire of owning your own home does not have to stay a dream or picture of thoughts; it can really and absolutely become a reality. Hey! You choose. It is possible to own your own home one day.

THIS WORKSHOP IS FOR YOU!

If you have a desire to own your own home then this workshop will provide you with the information you will need to purchase your home.

MHA is hosting a home-buyer workshop Thursday, September 26, 2013 at 3:00pm at the Eugene F. Young III Community Ser-

vice Building 2305 D Street. *New Construction at Carousel View Homes*



Citizens National Bank will facilitate the workshop. This workshop will provide you with information on what to expect during your home buying process and you will also gain knowledge regarding the process as well.

The workshop will only last 1.5 hours. Door prizes will be given and light refreshments will be served. So make time in your schedule to attend this workshop.

Looking forward to seeing you there!

For questions or concerns, please feel free to contact MHA Community and Supportive Service Staff, Elaine Mauricey at 601.693-2800, ext. 230 or Shelia Austin, 601.693-2800, ext. 228.

MHA PHONE NUMBERS

Maintenance Department 601-483-3328; Social Services 601-693-2800; Frank Berry Courts 601-482-1880; Eastern Gardens 601-482-3312; Mountain View Village 601-481-3424; Western Gardens 601-483-8612; Oakland Heights 601-481-3421; Highway Village, 8th & 9th Ave. 601-483-1816; George Reese Courts/Magnolia Courts 601-693-4586; Mount Barton/Sowashee Courts 601-483-0202; Carousel Place 601-482-0085; J.T. Davis 601-482-0077; MHA Police Liaison Cell 601-527-0407; Meridian Police Dispatch 601-484-6845; Central Office 601-693-4285



to Excellence”

MHA ANNOUNCEMENT BOARD: MHA ACCEPTING APPLICATIONS FOR THE MHA ESTEEM PROGRAM

Meridian Housing Authority is now accepting applications for the ESTEEM WORK TRAINING PROGRAM during the month of September. Applicants must reside at any one of MHA properties.

The ESTEEM PROGRAM is a two year workforce development training program that provides economic and job opportunities as well as on the job training. While working in this program, you will develop work skills that will allow you to become self sufficient and provide an improved quality of life for yourself and your family.

If you would like to apply for the Esteem program and want an application please come by MHA Social Services building or contact Elaine Mauriscey (601) 693-2800 ext 230, or Sheila Austin (601) 693-2800 ext 228.



Message from the Asset Management Coordinator



Asset Management Coordinator,
Trevelle McGlothlin

As temperatures continue to be at record breaking levels, please remember to drink plenty of water to avoid dehydration. For everyone's safety, we urge residents to supervise and be aware of your child's location at all times. Regarding maintenance please avoid over stocking your refrigerators and freezers. This causes a non-cooling issue in the lower level of your refrigerator. With bed bug occurrences on the rise, Dr. Johnson of America's Invertebrate Division offers these helpful hints: Look for blood stains or small black dots that look like mold or ground pepper around bed coverings. Bedbugs are about the size and shape of an apple seed, and you may find them hiding in corners or seams of the bedding. A simple check list includes; pulling back the linens, checking all the way around and under the mattress and behind the headboard. Please report any questionable bed bug sightings to your property manager immediately.

Enjoy the coming fall season and be safe.

Resident Advisory Board President's Message

The Resident Advisory Board would like to give a special thanks to all the children who participated in the 2013 Spelling Bee. We would like to encourage more children to participate in the MHA Spelling Bee for the upcoming year. Our children are our future leaders of tomorrow. Kids as the RAB president, I would like to encourage each of you to work hard and study hard in school this year and be the best that you can be! As parents we should empower our kids to go to bed early in order to get an adequate amount of sleep at least 6-8 hours sleep, eat a balance diet, and STUDY STUDY STUDY!

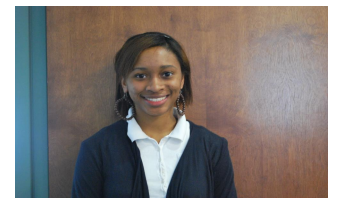
Brenda Griffin, Resident Advisory Board President



RAB members voice concerns regarding safety issues

Magnolia Resident Studies In Spain

Shelea Sims, one of MHA's previous scholarship recipients, a resident of Magnolia Court, and a junior at the University of Southern Mississippi, will spend the first semester of this year in Grenada, Spain studying Spanish which is her minor at University of Southern Mississippi.



Shelea Sims

Shelea's major at USM is Nursing. Ms. Sims will be residing at one of the universities for the first five weeks of her visit and the remaining five weeks she will be residing with a local family to learn more about the Spanish cities while visiting Spain. Ms. Sims stated she is very nervous about traveling to another country but will love to have the experience. Her studies will begin in September 2013. Ms. Sims asks that family and friends pray for her to have a safe trip.



"Committed to Excellence"

MHA website: : www.meridianhousing.net

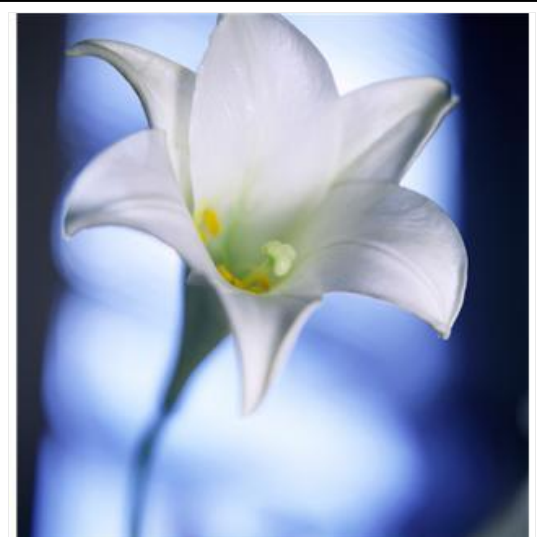
"Committed to Excellence"

Meridian Housing Authority
 2425 E Street
 Meridian, MS 39301
 601-693-4285

Mail To:

September 2013

Sun	Mon	Tue	Wed	Thu	Fri	Sat
1	2	3	4	5	6	7
8	9	10	11	12	13	14
15	16	17	18	19	20	21
22	23	24	25	26	27	28
29	30					



The MHA Home Life Newsletter For Residents

The MHA Home Life Newsletter For Residents is published monthly by the Resident Community & Supportive Services Department. We welcome submissions and we reserve the right to edit all materials used. Materials may be submitted to:

Meridian Housing Authority
 Resident Services Department, Attn. Newsletter
 2305 D. Street, Meridian, MS 39301

OR

E-mail to: saustin@meridianhousing.net

09/10 George Reese @ 3:30 p.m. Community Center
 09/11 Magnolia @ 3:30 a.m. Community Center
 09/12 Oakland Heights @ 10:00 Community Center
 09/13 Western Gardens @ 3:30 p.m. Community Center

09/26 Hwy Village @ 2:00 Community Center
 09/16 Sowashee @ 3:30 Community Center
 09/19 Eastern Garden @ 3:30 Community Center
 09/26 Mt. View @ 3:30 Community Center